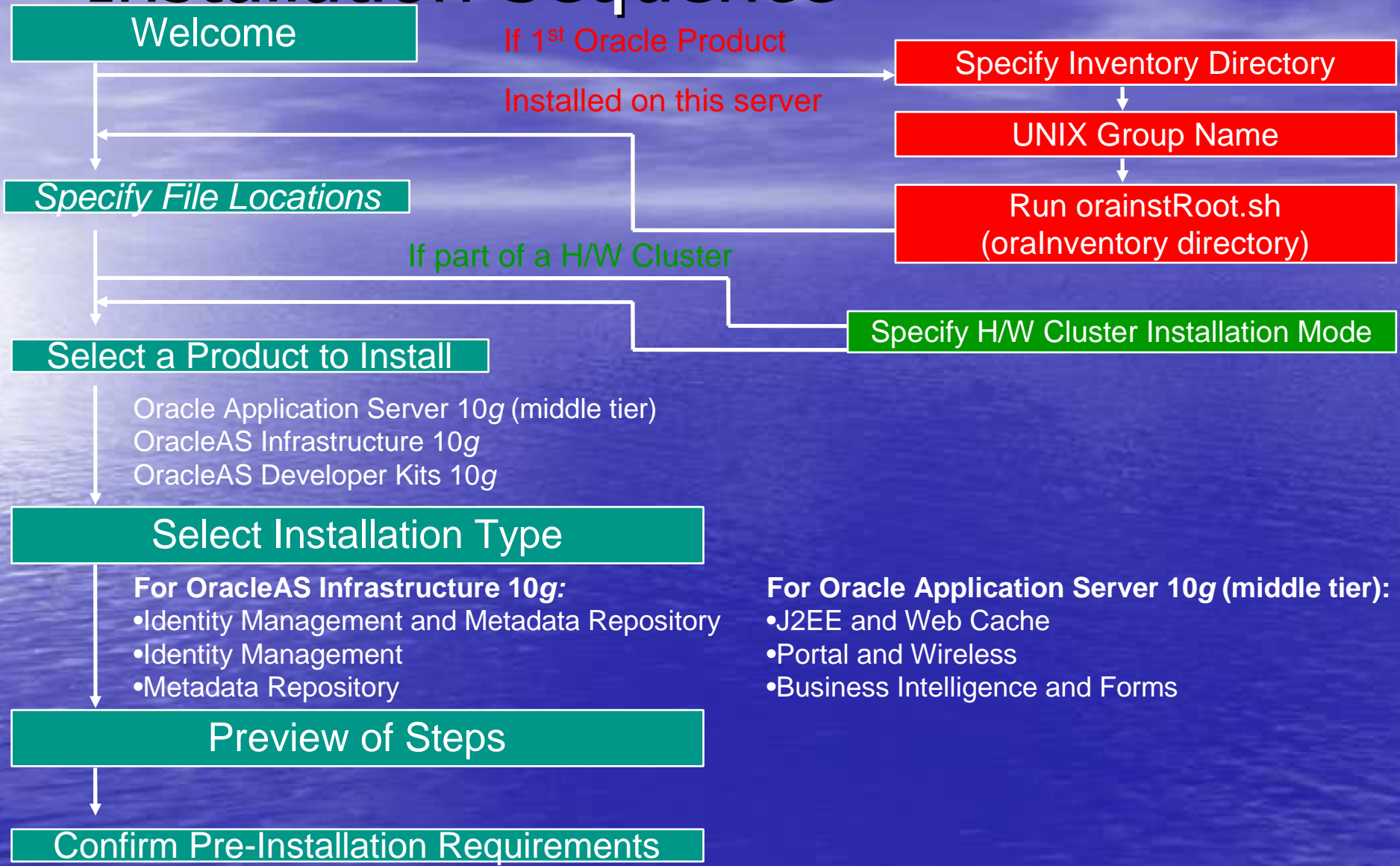


Oracle Application Server 10^g Installation

Installation Overview

- Installation Sequence
- Installing OracleAS Infrastructure 10g
- Installing Middle Tier 10g
- Silent Install
- Verifying the Installations

Installation Sequence

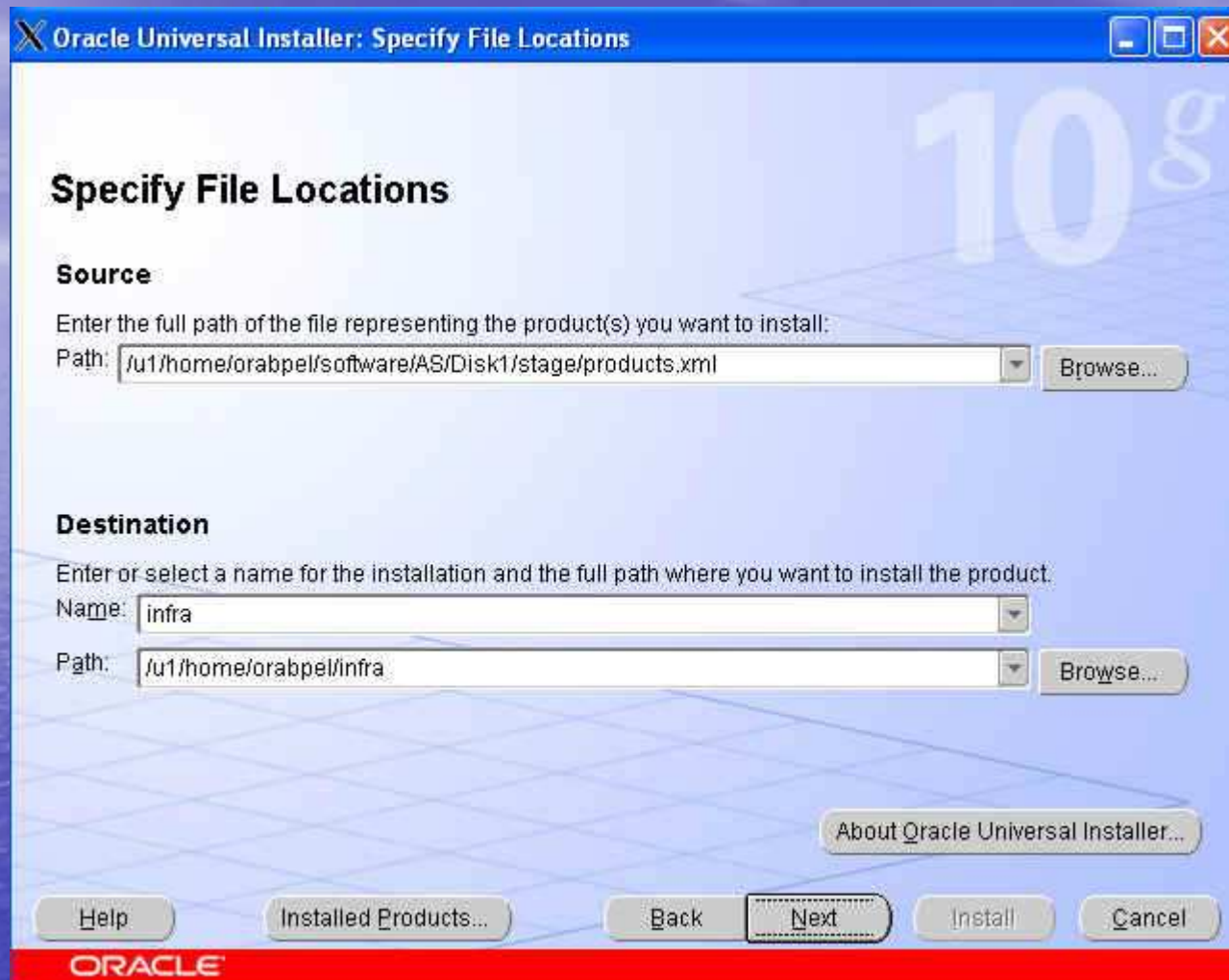


Installation Overview

- Installation Sequence
- Installing OracleAS Infrastructure 10g
- Installing Middle Tier 10g
- Silent Install
- Verifying the Installations

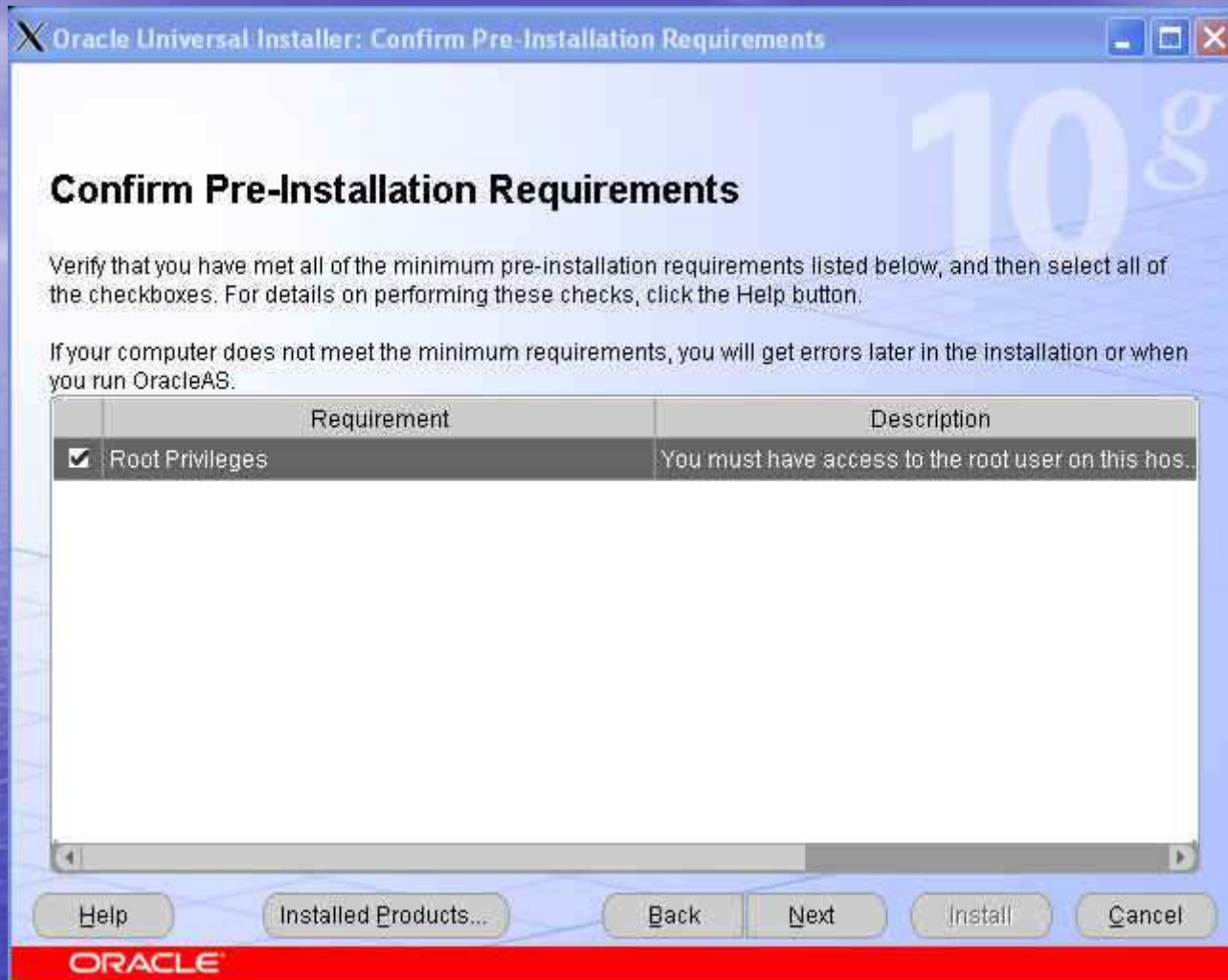
OracleAS Infrastructure 10g Components

- Identity Management components
 - Oracle Internet Directory
 - OracleAS Single Sign-On
 - Oracle Delegated Administration Services
 - Oracle Directory Integration and Provisioning
 - OracleAS Certificate Authority
- OracleAS Metadata Repository
 - Product metadata
 - Identity Management metadata
 - Management metadata









Oracle Universal Installer: Select Configuration Options

Select Configuration Options

Select the components that you would like to configure and automatically start at the end of the installation.

OracleAS Metadata is always configured.

If you want to use an existing Oracle Internet Directory, deselect it. The installer will then prompt you to enter the location of the existing Oracle Internet Directory.

Available Components:	Description
<input checked="" type="checkbox"/> OracleAS Metadata Repository	Configures OracleAS Metadata Repository.
<input checked="" type="checkbox"/> Oracle HTTP Server	Serves static and dynamic Web content.
<input checked="" type="checkbox"/> OracleAS Containers for J2EE	Runs Enterprise Java applications.
<input checked="" type="checkbox"/> Oracle Internet Directory	Configures an LDAP server for identity and security.
<input checked="" type="checkbox"/> OracleAS Single Sign-On	Configures a directory-enabled single sign-on for applications.
<input checked="" type="checkbox"/> OracleAS Delegated Administration Service	Provides web-based identity and security administration.
<input checked="" type="checkbox"/> OracleAS Directory Integration and Provisioning	Enables directory synchronization and user and group provisioning.
<input checked="" type="checkbox"/> OracleAS Certificate Authority (OCA)	Creates and manages security certificates.
<input type="checkbox"/> High Availability and Replication	Displays HA and/or Replication configuration options.

Help Installed Products... Back Next Install Cancel

ORACLE





Oracle Universal Installer: Specify OCA Distinguished Name

Specify OCA Distinguished Name

To issue digital certificates OracleAS Certificate Authority(OCA) must have a unique identifier in the form of a Distinguished Name(DN) based on the X.500 standard.

Enter the DN you want OCA to use. You can enter a typical set of DN components, or a custom DN.

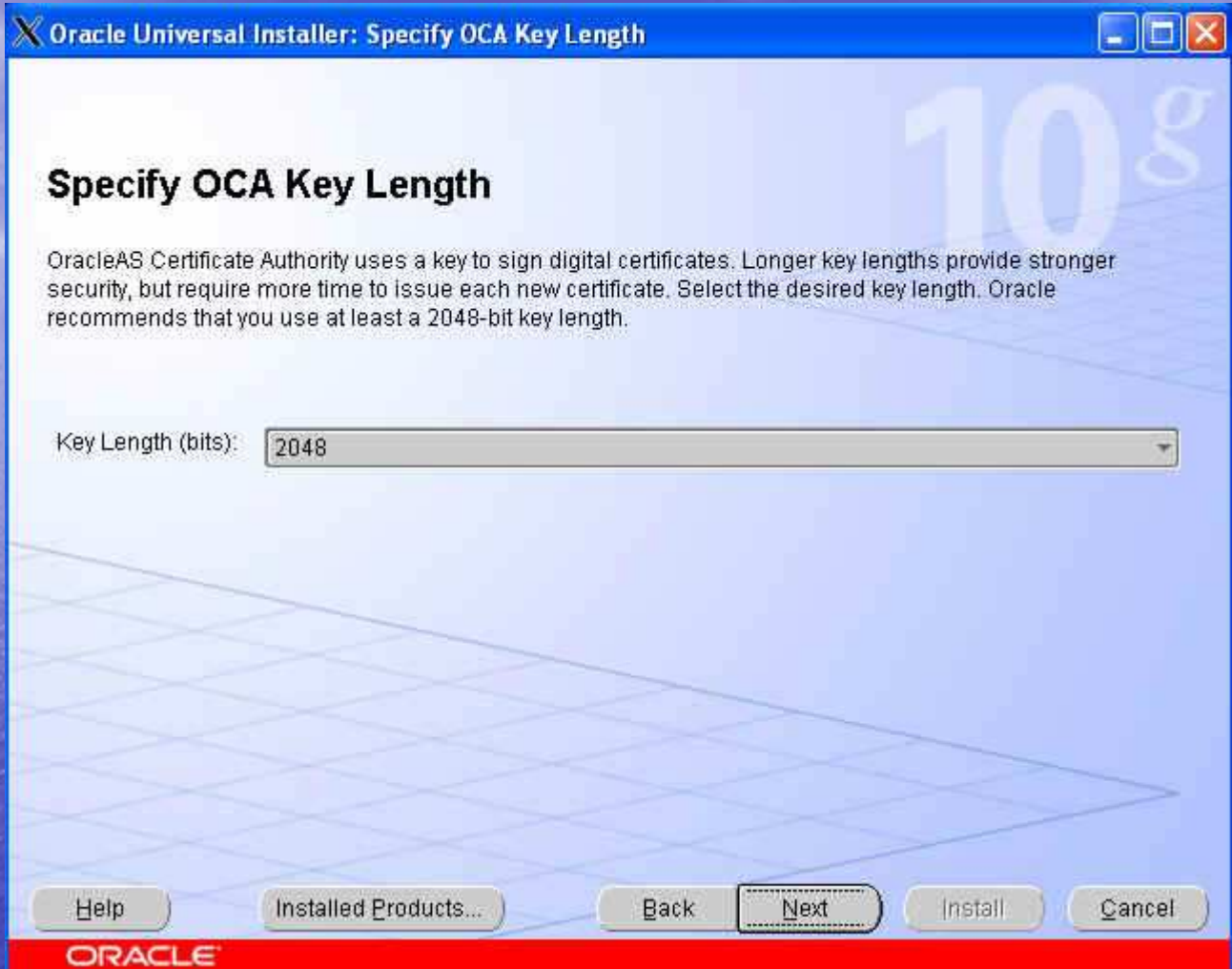
Typical DN:

Common Name (CN):	<input type="text" value="ST Certificate Authority"/>
Organizational Unit (OU):	<input type="text" value="Server Technologies"/>
Organization (O)*:	<input type="text" value="Oracle"/>
Country (C):	<input type="text" value="United States"/>

Custom DN:

Example DN: CN=Acme Certificate Authority,OU=IT Division,O=Acme Corporation,C=US

ORACLE



Oracle Universal Installer: Specify OCA Administrator's Password

Specify OCA Administrator's Password

Provide a password for the OracleAS Certificate Authority administrator. The password must be at least 8 characters long and up to 30 characters long, and must contain at least one number and one alphabet. Moreover, it should not contain any white space.

Administrator's Password:

Confirm Password:

Help Installed Products... Back Next Install Cancel

ORACLE

Oracle Universal Installer: Specify Database Configuration Options

Specify Database Configuration Options

Database Naming
A Global Database Name, typically of the form "name.domain", uniquely identifies an Oracle database. In addition, each database is referenced by at least one Oracle System Identifier (SID). Specify the Global Database Name and SID for this database.

Global Database Name: SID:

Database Character Set
The number of language groups to be stored determine which database character set to use. See "Help" for the definition of language groups. For the Unicode database character set, select "Unicode Standard UTF-8 AL32UTF8"

Select Database Character set:

Database File Location
Use the file system for database storage. For best database organization and performance, Oracle recommends installing database files and Oracle software on separate disks.

Specify Database File Location:

ORACLE

Oracle Universal Installer: Specify Database Schema Passwords

Specify Database Schema Passwords

The Starter Database contains pre-loaded schemas, most of which have passwords that will expire and be locked at the end of install. After the install is complete, you must unlock and set new passwords for those accounts you wish to use. Schemas used for the database management and post-install functions are left unlocked, and passwords for these accounts will not expire. Specify the passwords for these accounts.

Use different passwords for these accounts

User Name	Enter Password	Confirm Password
SYS		
SYSTEM		
SYSMAN		
DBSNMP		

Use the same password for all the accounts

Enter Password: Confirm Password:

Help Installed Products... Back Next Install Cancel

ORACLE

Oracle Universal Installer: Specify Instance Name and ias_admin Password

Specify Instance Name and ias_admin Password

All OracleAS instances installed on a host must have unique names. The hostname and domain name of the host are appended to the instance name.

Each OracleAS instance has its own password, regardless of which user performed the installation. Passwords are not shared across instances, even if the instances were installed by the same user.

The password must have a minimum of 5 alphanumeric characters, maximum 30 characters, and at least one of the characters must be a number.

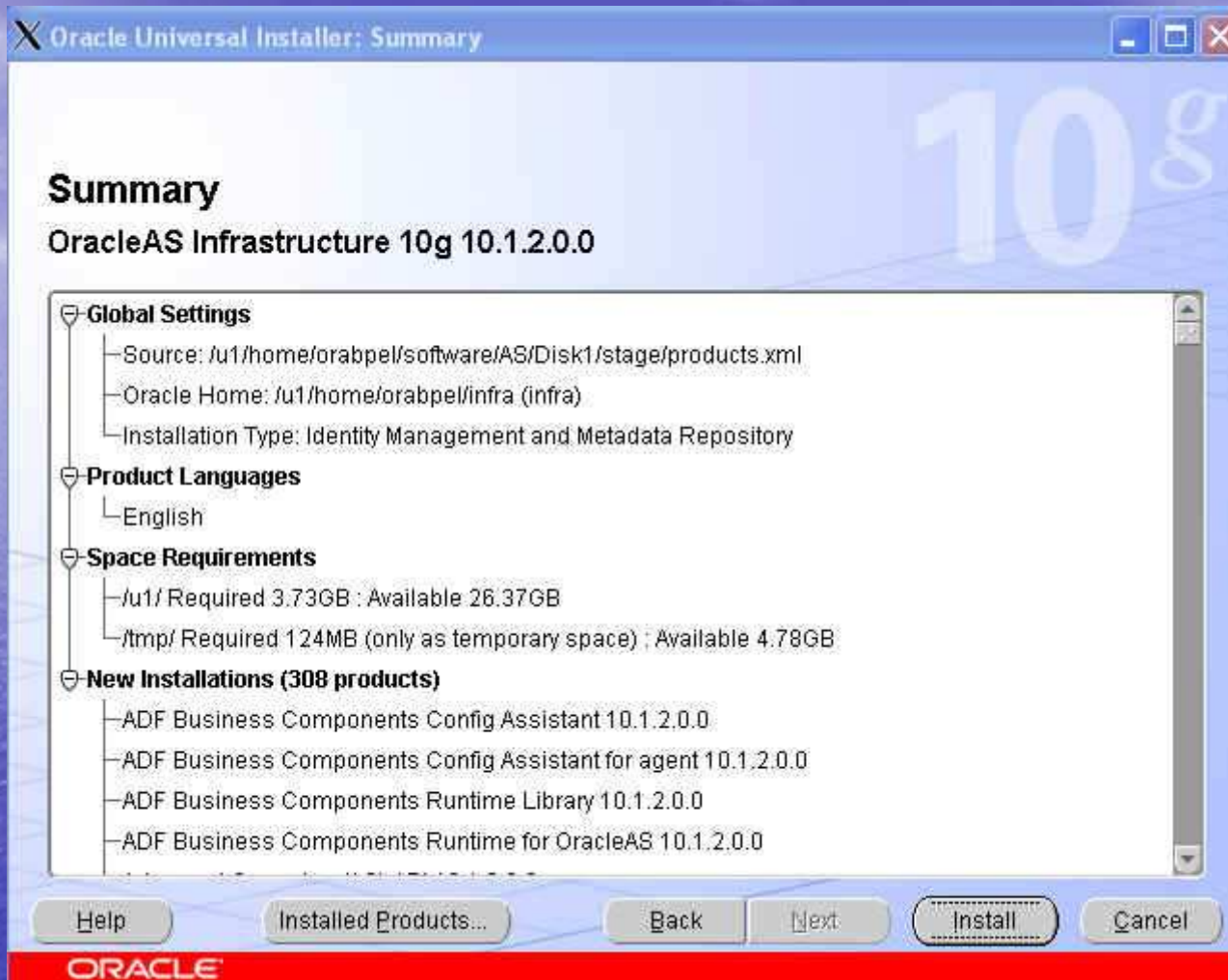
Administrator Username: ias_admin

Instance Name:

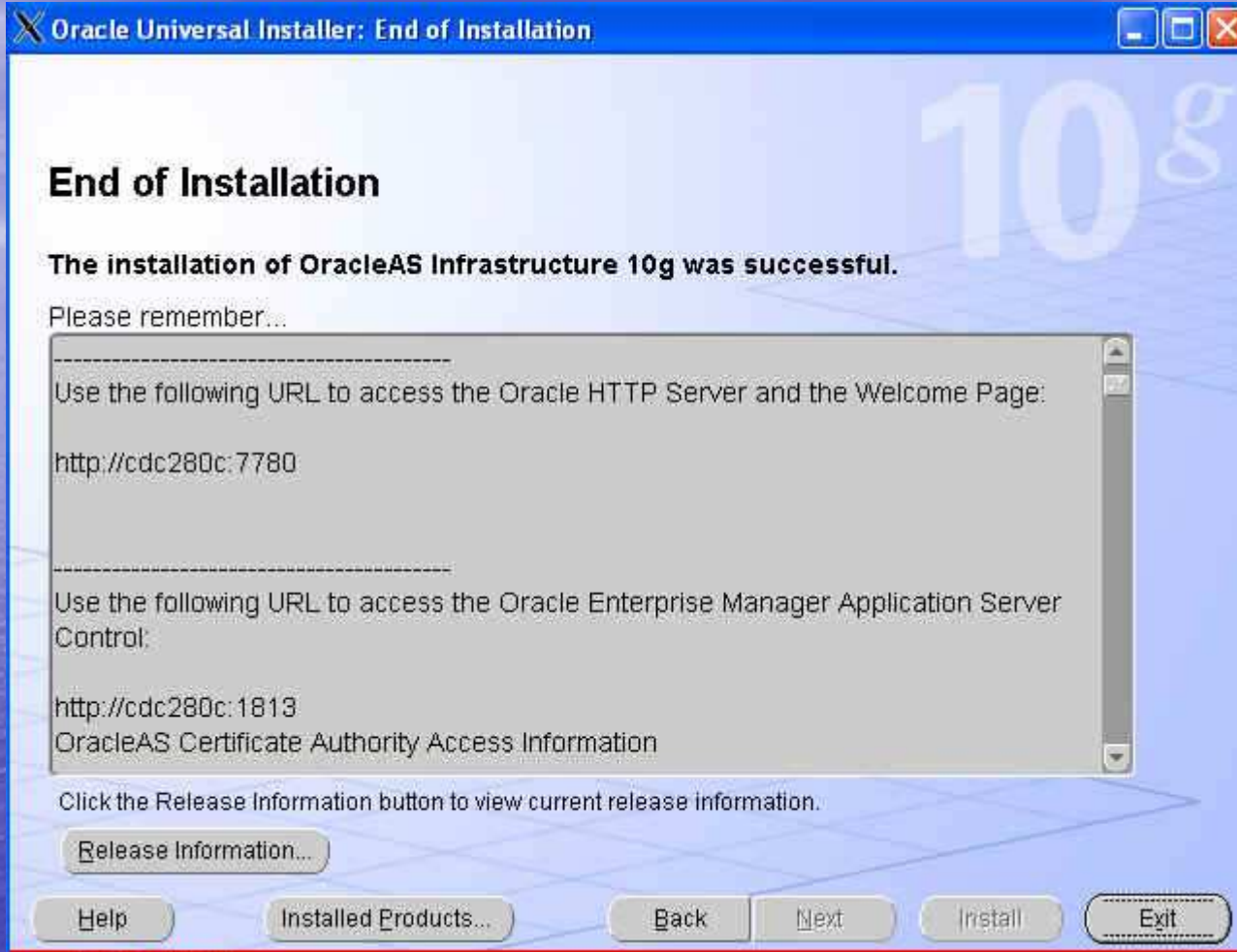
ias_admin Password:

Confirm Password:

ORACLE







ORACLE Enterprise Manager 10g
Application Server Control

[Topology](#) [Preferences](#) [Help](#)

Farm: orcl.cdc280c

Instances can be grouped and managed together by configuring standalone instances in a common repository. This collection of instances is known as an Oracle Application Server Farm.

Repository Type **Database**

Clusters

[Create Cluster](#)

Select Name	Status	Instances
There are no clusters in the farm.		

Standalone Instances

These instances belong to the farm but are not part of any cluster.

[Join Cluster](#)

Select Name	Host	Oracle Home
<input checked="" type="radio"/> infra.cdc280c	cdc280c	/u1/home/orabpel/infra

[Topology](#) | [Preferences](#) | [Help](#)

Installation Overview

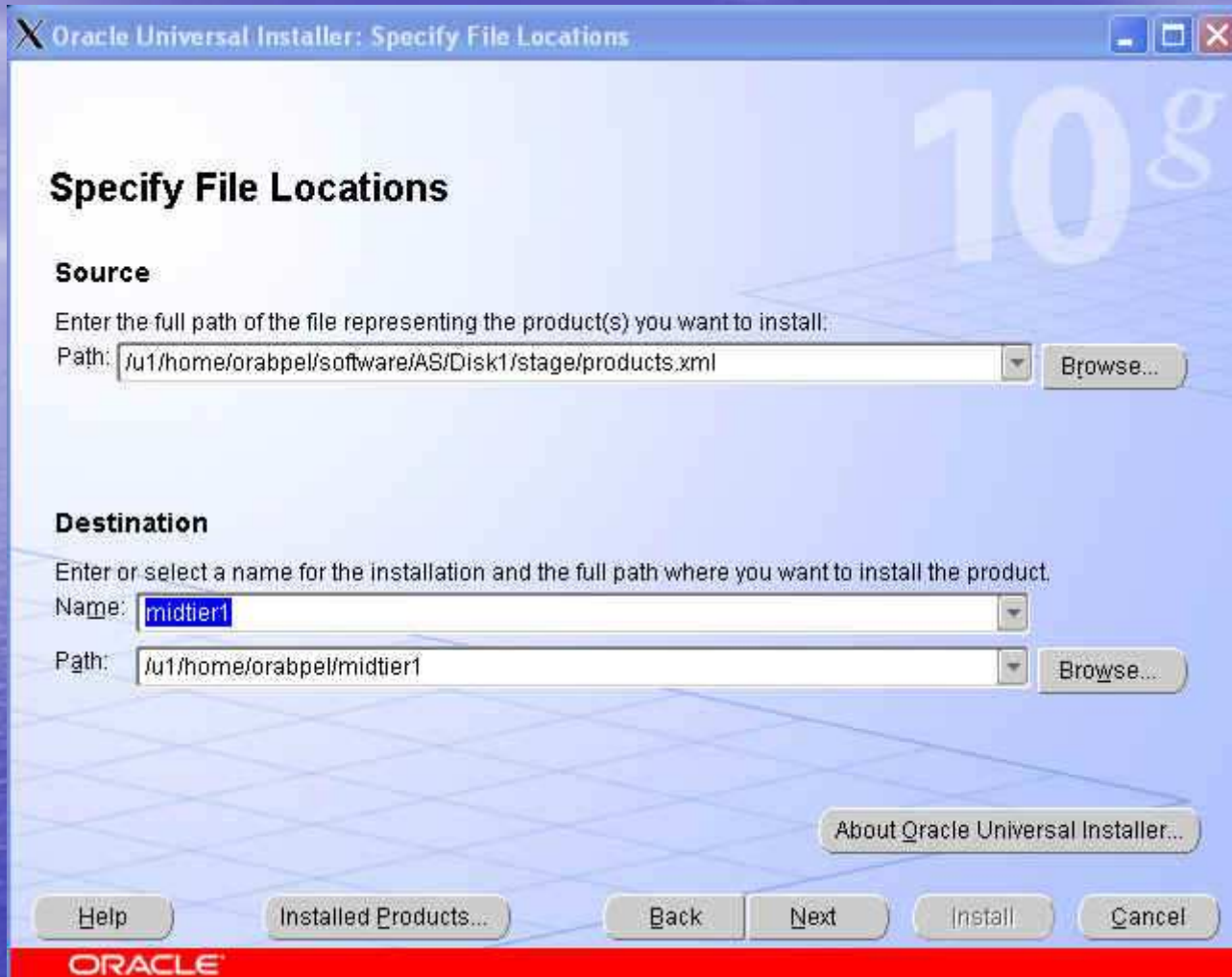
- Installation Sequence
- Installing OracleAS Infrastructure 10g
- Installing Middle Tier 10g
- Silent Install
- Verifying the Installations

Middle Tier Types

- Oracle Application Server has three types of middle tiers
 - J2EE and Web Cache
 - Portal and Wireless
 - Business Intelligence and Forms
- The Portal & Wireless and the Business Intelligence & Forms types require an OracleAS Infrastructure 10g, because components in these middle tier types need to access their schemas in the OracleAS Metadata Repository.
- The J2EE & Web Cache type requires some infrastructure components only if you are using the OracleAS Database-Based Cluster and/or the Identity Management Access option.

Components in the Middle Tier

	J2EE & Web Cache	Portal & Wireless	BI & Forms
Oracle HTTP Server	Yes	Yes	Yes
OC4J	Yes	Yes	Yes
OracleAS Web Cache	Yes	Yes	Yes
Oracle Enterprise Manager Application Server Control	Yes	Yes	Yes
OracleAS Portal		Yes	Yes
OracleAS Wireless		Yes	Yes
OracleAS Personalization			Yes
OracleAS Discoverer			Yes
OracleAS Reports Services			Yes
OracleAS Forms Services			Yes







Oracle Universal Installer: Confirm Pre-Installation Requirements

Confirm Pre-Installation Requirements

Verify that you have met all of the minimum pre-installation requirements listed below, and then select all of the checkboxes. For details on performing these checks, click the Help button.

If your computer does not meet the minimum requirements, you will get errors later in the installation or when you run OracleAS 10g.

Requirement	Description
<input checked="" type="checkbox"/> Root privileges	You must have access to the root user on this hos..

Help Installed Products... Back Next Install Cancel

ORACLE

Oracle Universal Installer: Select Configuration Options

Select Configuration Options

Select the components that you would like to configure and automatically start at the end of the installation.

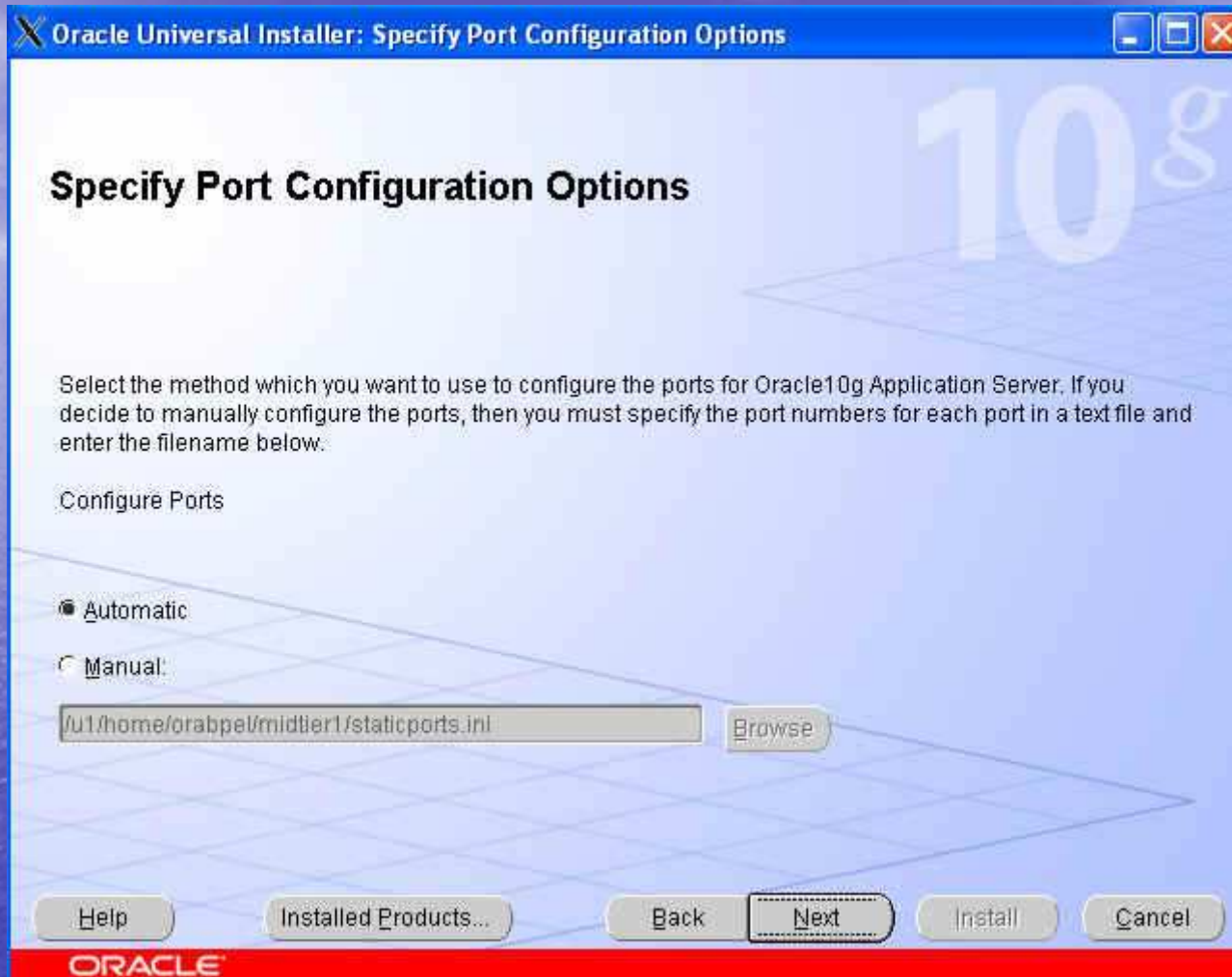
You can always configure any component after installation. Follow the configuration instructions in the documentation for each component.

Oracle HTTP Server and OracleAS 10g Containers for J2EE are always configured.

Available Components:	Description
<input checked="" type="checkbox"/> Oracle HTTP Server	Serves both static and dynamic web content.
<input checked="" type="checkbox"/> OracleAS 10g Containers for J2EE	Runs enterprise JAVA applications.
<input type="checkbox"/> OracleAS 10g Web Cache	Accelerates the delivery of both static and dynamic...
<input type="checkbox"/> OracleAS 10g Farm Repository	OracleAS 10g Farm Repository
<input type="checkbox"/> Identity Management Access	Enables Single Sign-On for J2EE and web applic...

Help Installed Products... Back **Next** Install Cancel

ORACLE



Oracle Universal Installer: Specify Instance Name and ias_admin Password

Specify Instance Name and ias_admin Password

All OracleAS 10g instances installed on a host must have unique names. The hostname and domain name of the host are appended to the instance name.

Each OracleAS 10g instance has its own password, regardless of which user performed the installation. Passwords are not shared across instances, even if the instances were installed by the same user.

The password must have a minimum of 5 alphanumeric characters, maximum 30 characters, and at least one of the characters must be a number.

Administrator Username: ias_admin

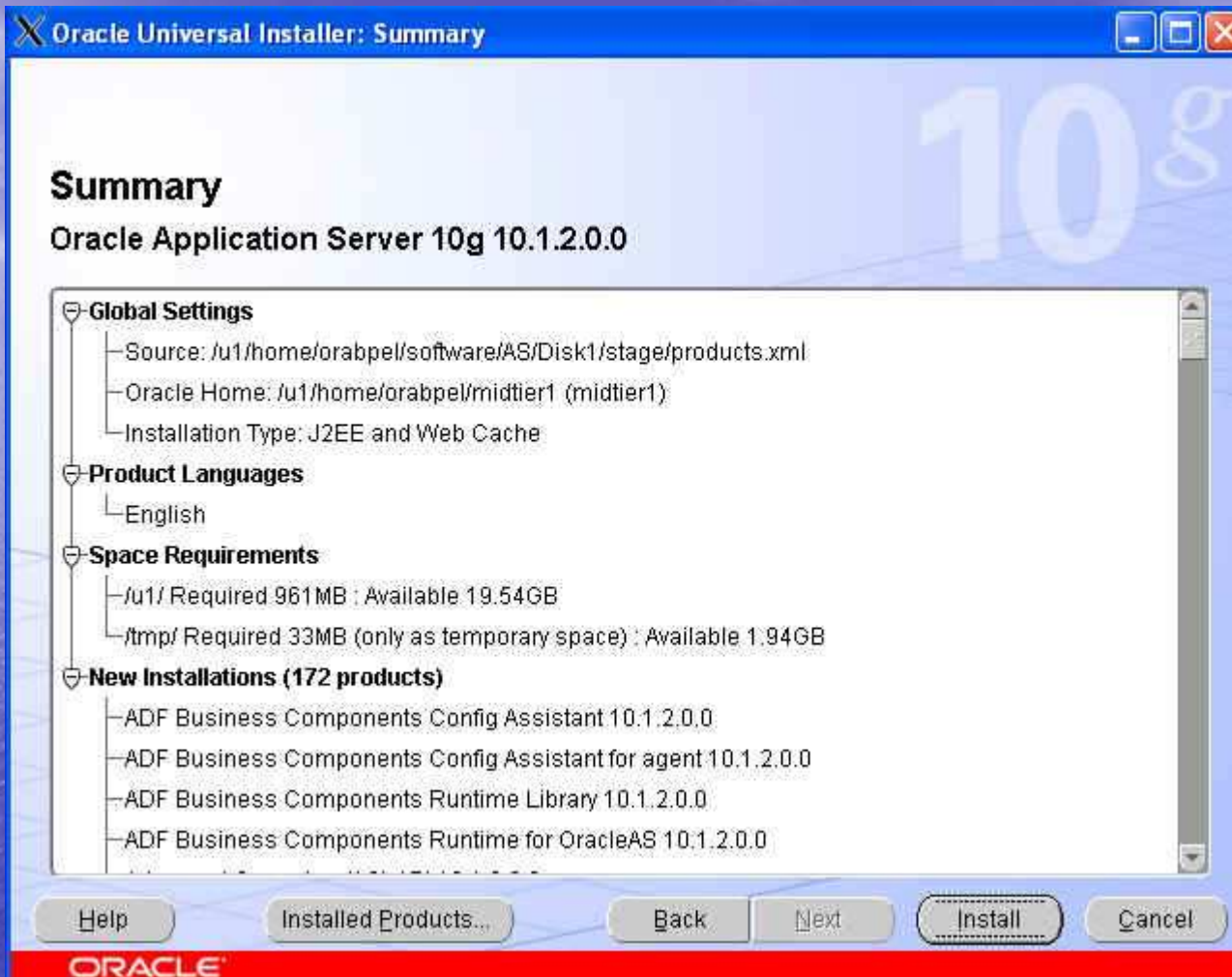
Instance Name:

ias_admin Password:

Confirm Password:

[Help](#) [Installed Products...](#) [Back](#) [Next](#) [Install](#) [Cancel](#)

ORACLE



Oracle Universal Installer: Configuration Assistants

Configuration Assistants

The following configuration assistants will configure and start the components you selected earlier.

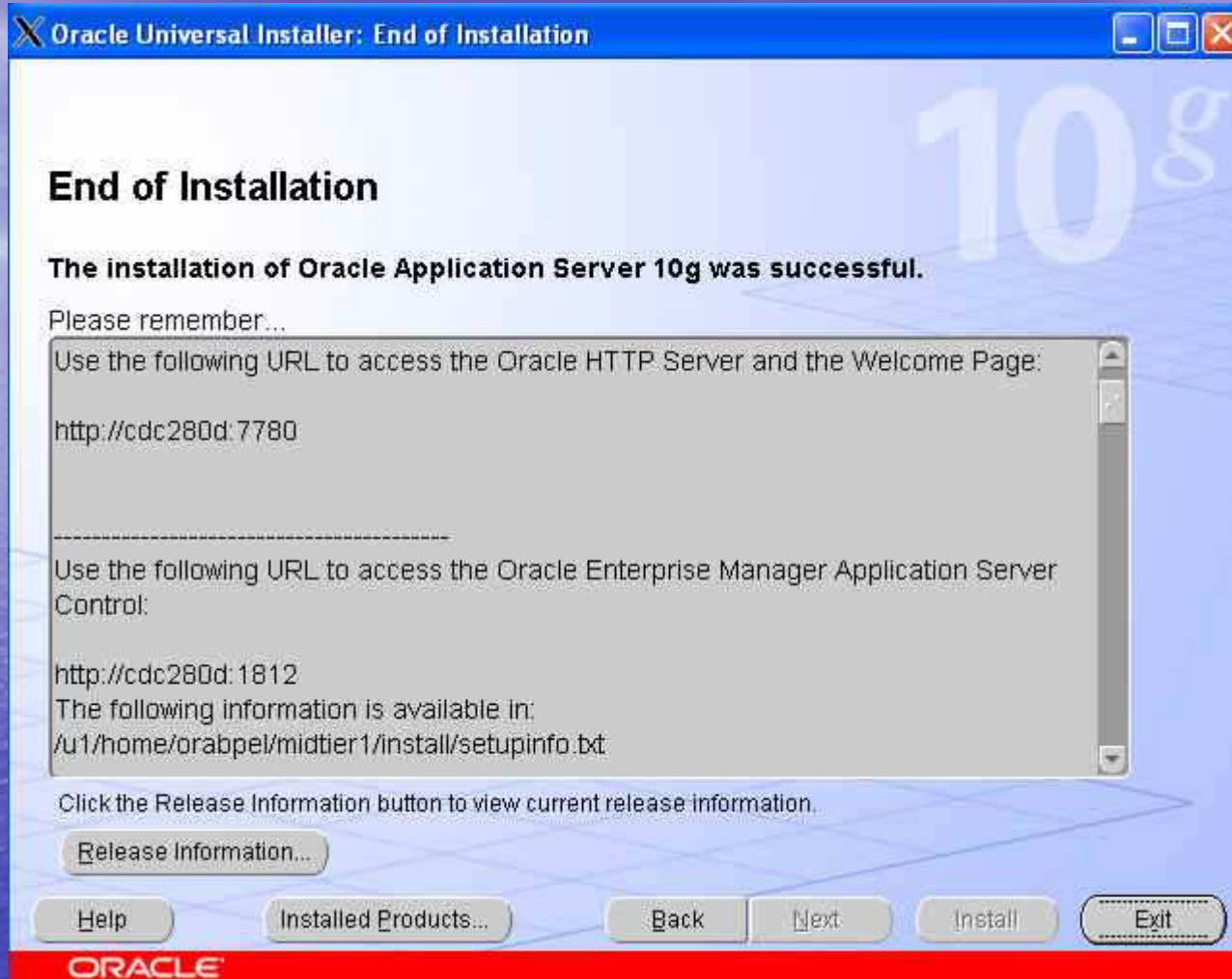
Tool Name	Status	Type
<input type="checkbox"/> HTTP Server Configuration Assistant	Succeeded	Recommended
<input type="checkbox"/> ADF Business Components Configuration Assistant	Succeeded	Recommended
<input type="checkbox"/> Java Security Configuration Assistant	Succeeded	Recommended
<input type="checkbox"/> OC4J Configuration Assistant	Succeeded	Recommended
<input type="checkbox"/> OracleAS Instance Configuration Assistant	Succeeded	Recommended
<input checked="" type="checkbox"/> OC4J Instance Configuration Assistant	In progress...	Recommended
<input checked="" type="checkbox"/> OPMN Configuration Assistant	Pending	Recommended

Details (see full log at /u1/apps/orainventory/logs/installActions2005-11-26_03-53-05PM.log):

```

OC4J instance 'home': Adding property 'jbo.server.in_oc4j=true'
Adding web-app 'IsWebCacheWorkingWeb.war' for app 'IsWebCacheWorking'.
Initializing DCM..done.
OC4J instance 'home' already exists.Starting OC4J instance 'home'..done.Deploying application 'BC4J' to
OC4J instance 'home'.
  
```

ORACLE



Application Server: midtier1.cdc280d

[Home](#) [J2EE Applications](#) [Ports](#) [Infrastructure](#)

Page Refreshed Nov 26, 2005 4:17:34 PM

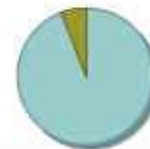
General



[Stop All](#) [Restart All](#)

Status **Up**
 Host [cdc280d](#)
 Installation Type **J2EE and Web Cache**
 Oracle Home [/u1/home/orabpel/midtier1](#)

CPU Usage



Application Server (0%)
 Idle (94%)
 Other (6%)

Memory Usage



Application Server (15% 629MB)
 Free (19% 759MB)
 Other (66% 2,706MB)

System Components

[Enable/Disable Components](#) [Configure Component](#) [Create OC4J Instance](#)

[Start](#) [Stop](#) [Restart](#) [Delete OC4J Instance](#)

[Select All](#) | [Select None](#)

Select	Name	Status	Start Time	CPU Usage (%)	Memory Usage (MB)
<input type="checkbox"/>	home	↑	Nov 26, 2005 4:11:10 PM	0.07	119.41
<input type="checkbox"/>	HTTP_Server	↑	Nov 26, 2005 4:11:10 PM	0.03	38.14

Installation Overview

- Installation Sequence
- Installing OracleAS Infrastructure 10g
- Installing Middle Tier 10g
- **Silent Install**
- Verifying the Installations

Silent Installation

- Silent installation eliminates the need to monitor the Oracle Application Server installation because there is no graphical output and no input by the user

Non-interactive Installation

- Use non-interactive installation of Oracle Application Server when there are specific screens you want to observe during installation.

Silent Installation

- Silent installation of Oracle Application Server is accomplished by:
 - supplying the Oracle Universal Installer with a response file (text file)
 - specifying the `–silent` flag on the command line
- The OUI uses the variables and parameter values contained in the response file to provide answers to all of the installer prompts
- Silent installation displays no graphical output
- If this is a first time installation of Oracle Application Server, you must create the `oraInst.loc` file before starting
- Following installation of Oracle Application Server, you need to run the `root.sh` script

UltraEdit-32 - [D:\docs\SWAT\proj\install-ws\silent\geoffJ2EEandWebCache-nn.rsp*]

File Edit Search Project View Format Column Macro Advanced Window Help

geoffJ2EEandWebCache-nn.rsp*

Filter: Refresh

Open Files

Open Files

D:\docs\SWAT\proj\install-ws\silent\geoffJ2EEandWebCache-nn.rsp*

```
# J2EE and Web Cache Silent Install
# Geoff Grandstaff 24 OCT 2003
RESPONSEFILE_VERSION=2.2.1.0.0
UNIX_GROUP_NAME="dba"
FROM_LOCATION="/mnt/nfs/ias/m19stage/Disk1/stage/products.jar"
FROM_LOCATION_CD_LABEL="LABEL1"
LOCATION_FOR_DISK2="../../Disk2"
LOCATION_FOR_DISK3="../../Disk3"
ORACLE_HOME="/oracle/oh_j2eewc_1"
ORACLE_HOME_NAME="OH_J2EEWC_1"
TOPLEVEL_COMPONENT=("oracle.iappserver.iappstop","9.0.4.0.0")
SHOW_SPLASH_SCREEN=false
SHOW_WELCOME_PAGE=false
SHOW_COMPONENT_LOCATIONS_PAGE=false
SHOW_CUSTOM_TREE_PAGE=false
SHOW_SUMMARY_PAGE=false
SHOW_INSTALL_PROGRESS_PAGE=false
SHOW_REQUIRED_CONFIG_TOOL_PAGE=false
SHOW_CONFIG_TOOL_PAGE=false
SHOW_RELEASE_NOTES=false
SHOW_ROOTSH_CONFIRMATION=false
SHOW_END_SESSION_PAGE=false
SHOW_EXIT_CONFIRMATION=false
NEXT_SESSION=false
NEXT_SESSION_ON_FAIL=false
SHOW_DEINSTALL_CONFIRMATION=false
SHOW_DEINSTALL_PROGRESS=false
ACCEPT_LICENSE_AGREEMENT=true
RESTART_SYSTEM=false
COMPONENT_LANGUAGES=("en")
INSTALL_TYPE="Core"
szl_RepositoryUserInput= { "rsaver03.us.oracle.com:1521:r03i:r03i.us.oracle.com" }
oracle.iappserver.instance:szl_InstanceInformation= { "core_904_1", "welcome99",
"welcome99" }
szlSpecifyOIDLogin= { "orcladmin", "welcome99" }
szOIDwithSSLStatus="N"
```

Performing the Installation

- Silent Install

Unix:

```
$ ./runInstaller -silent -responseFile /<absolute-  
path>/<response-file-name>
```

Remember to run root.sh at the end!!

Windows:

```
E:\> setup.exe -silent -responseFile  
absolute_path_and_filename
```

Oracle Application Server



Welcome

Demonstrations

New Features

Welcome

to Oracle Application Server

Overview



Oracle Application Server 10g is an integrated, standards-based software platform that allows organizations of all sizes to be more responsive to changing business requirements.

It provides all the middleware services you need to deploy and manage applications and Web services, deliver personalized applications through enterprise portals and mobile devices, provide real-time business intelligence, integrate applications, and automate business processes. It is optimized to take full advantage of cluster computing and enterprise grid deployment architectures.

Documentation

The Oracle Application Server documentation set consists of the documentation library and the platform-specific documentation.

- The Oracle Application Server documentation library contains

Release Notes

[Read the latest Release Notes](#) on Oracle Technology Network for important information about Oracle Application Server 10g.

Oracle Enterprise Manager Application Server Control

[Log on to Oracle Enterprise Manager Application Server Control](#) to manage and monitor Oracle Application Server.

New Features

- [J2EE, Web Services and Internet Applications](#)
- [Portal](#)
- [Wireless](#)
- [Caching](#)
- [Business Intelligence](#)

Summary

- Installation Sequence
- Installing OracleAS Infrastructure 10g
- Installing Middle Tier 10g
- Silent Install
- Verifying the Installations